

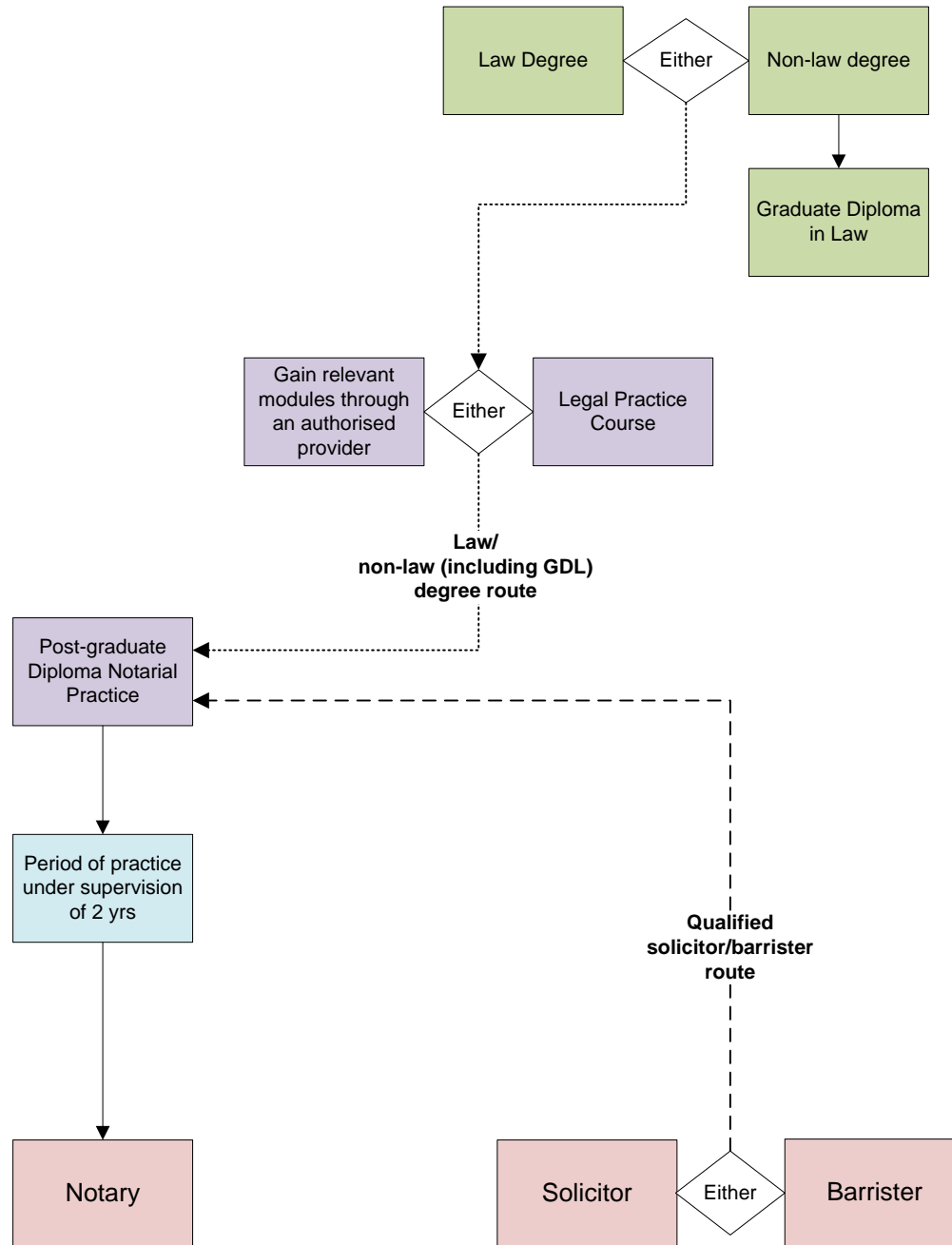
Secondary Education

Higher Education

Vocational Education

Professional Training

Qualified Lawyer



Disclaimer: This map includes the main routes of entry to the eight branches of the legal profession which are under the oversight regulation of the Legal Services Board (LSB). It has been developed for illustrative purposes only and does not include every possible route of entry. The LSB and the Approved Regulators take no responsibility for any harm, damage or loss caused by the provision of this information. If anyone one is interested in further information on the various routes into the legal profession, they should directly consult the relevant Approved Regulator to obtain accurate and up to date information based on personal circumstances.